

**ROUND SHOP LIGHT**

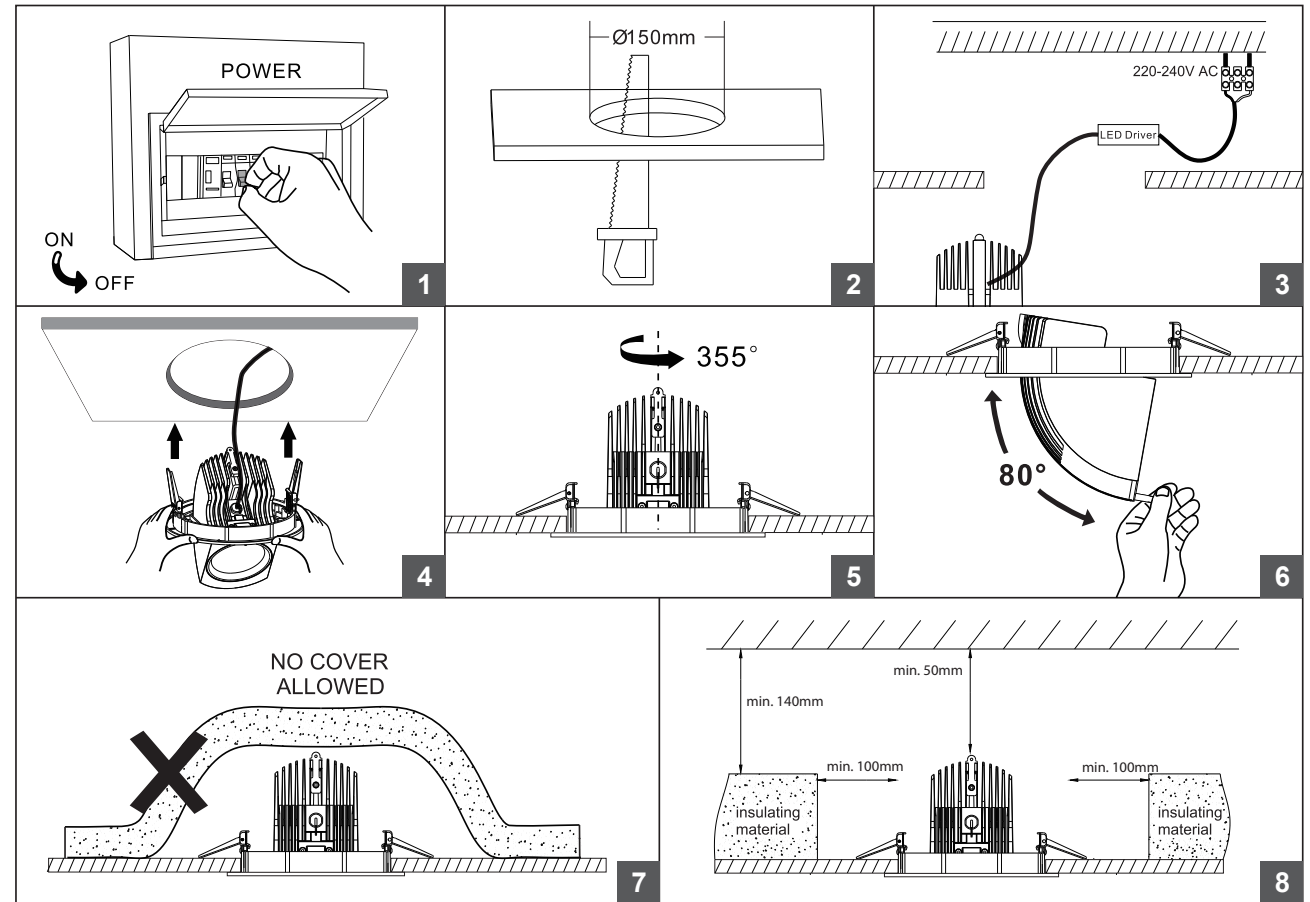


WATTS	CODE	COLOUR	LUMENS	EFFICACY
28W	BL-CS-3000-WW	Warm White 3000K	2400lm	85lm/W
	BL-CS-3000-NW	Natural White 4000K	2600lm	92lm/W
42W	BL-CS-3001-WW	Warm White 3000K	3300lm	78lm/W
	BL-CS-3001-NW	Natural White 4000K	3500lm	83lm/W

IES FILES AVAILABLE

VOLTS	220-240V AC 50/60Hz input	DIMENSIONS	Ø168mm
POWER FACTOR	0.98	CUT-OUT	Ø150mm
OPERATING TEMP.	-20°C ~ +50°C	ADJUSTMENT	78° tilt
CRI	83	HOUSING	Die-cast aluminium
SOURCE LIFE	50,000 hours	MOUNTING	2 x spring clips on flush mounting ring
LED BRAND	Citizen	INGRESS PROTECTION	Indoor use only
WARRANTY	5 years	CONNECTION METHOD	External driver with concealed screw terminals
		CONTROL	Non-dimmable

**INSTRUCTIONS**



**SAFETY NOTES**

- Switch off the electricity at the mains before commencing installation.
- Connect to a 220-240V AC supply in accordance with NZ regulation.
- Make sure all connections are tight with no loose strands.
- Ensure fire regulations are not breached when fitting downlight.

**FIRE RISK**

Required clearance from structural members and building elements is 100mm SCB (side clearance to building element) and 50mm HCB (height clearance to building element).

**WARNING**

- Indoor use only.
- Please ensure the packaging is disposed of safely.
- If any cable is defective, do not use.
- Do not connect the light fixture to the mains power directly.
- Only a registered electrician should install this product.

