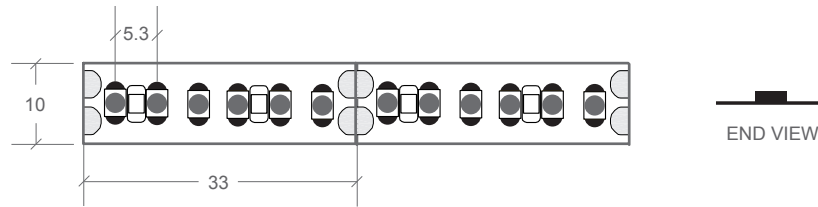


LED RIBBON STRIP | 13 WATTS PER METRE

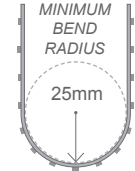
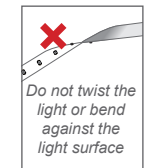
COLOUR	CODE	LUMENS	EFFICACY
WARM WHITE 3000K	BL-LS-1002-WW	1000lm/m	74lm/W
NATURAL WHITE 4000K	BL-LS-1002-NW	1020lm/m	76lm/W
COOL WHITE 5500K	BL-LS-1002-CW	1080lm/m	80lm/W

COLOUR VARIANCE +/- 200K
ELECTRICAL & OPTICAL DATA VARIANCE +/- 10%
SOLD BY THE METRE

LED WATTS	INPUT VOLTS	INPUT AMPS	OPERATING TEMP.
13.4W/m	24V DC constant voltage	550mA/m	-20°C ~ +50°C
DIMENSIONS		W10 × H2.4mm	
CRI		≥80	
LED PITCH		5.3mm	
BEAM ANGLE		120°	
CUTTING LENGTH		33mm	
MAX. RUN PER POWER FEED		10 metres	
CONTROL		Dimmable by PWM signal	
MOUNTING		3M adhesive backing	
INGRESS PROTECTION		Indoor use only	
SOURCE LIFE		Up to 50,000 hours	
WARRANTY		3 years	

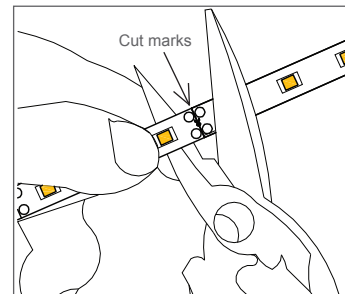


NOTE:

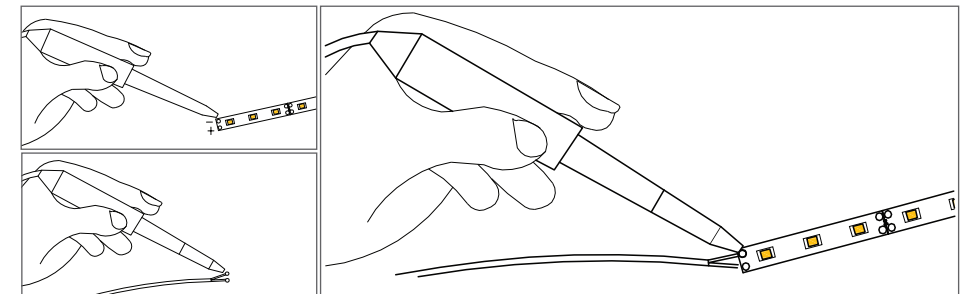


CABLE CONNECTION

Cut led ribbon strip at the cut marks outlined only.

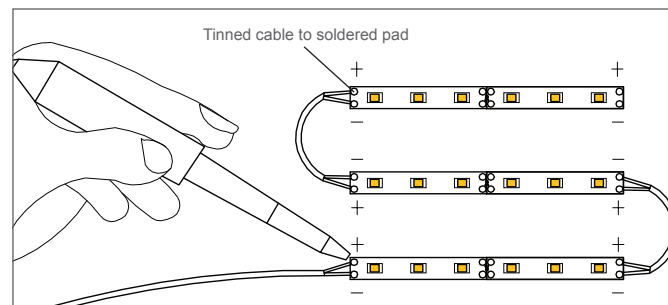


To provide a cable connection, cut and trim the cable to the appropriate length. Solder the wires onto the end of the ribbon strip ensuring the correct +/- polarity.



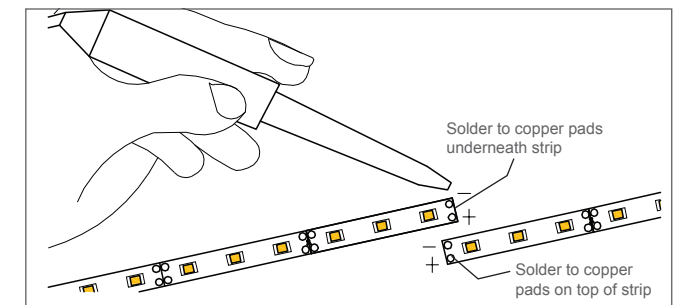
CORNER CONNECTION

To provide a corner connection, cut and trim the wires to the appropriate length for the corner. Solder wires to the end of the ribbon strip and to the beginning of the new ribbon strip ensuring the correct polarity.



END TO END CONNECTION

To connect one length of ribbon strip to another, overlap the ribbon strips; matching the +/- polarity between both lengths. Heat and solder the two lengths of ribbon together, using the soldering pads on top and underneath the opposing strip to form a continuous electrical circuit.



PLEASE NOTE DRAWINGS ARE AN INSTALLATION GUIDE ONLY.

Each LED Ribbon Strip application may have variable factors.
Cable size may need to be specified to limit the voltage drop throughout the circuit.

ALWAYS UNCOIL BEFORE USE