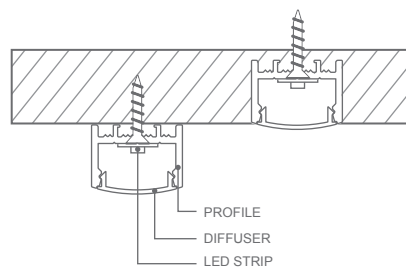
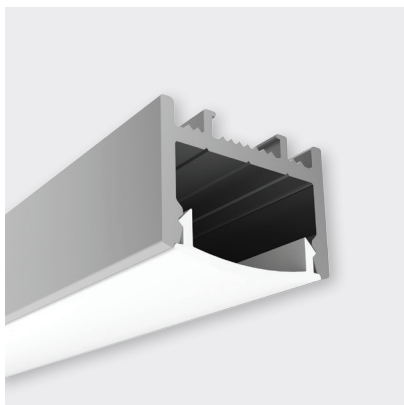
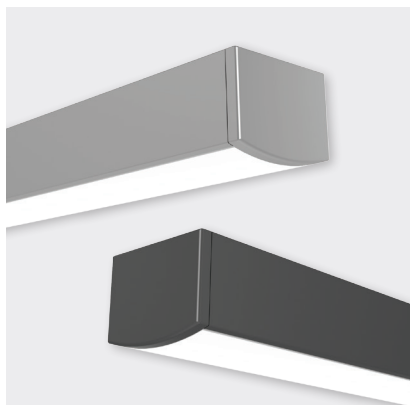


## BASELINE 01



FINISH	DIFFUSER	CODE
ANODISED	OPAL	BL-LP-B01AO-XX
	CLEAR	BL-LP-B01AC-2M
BLACK	OPAL	BL-LP-B01BO-XX
	CLEAR	BL-LP-B01BC-2M
WHITE	OPAL	BL-LP-B01WO-XX
	CLEAR	BL-LP-B01WC-2M

XX = (2M) 2 METRE or (4M) 4 METRE LENGTHS

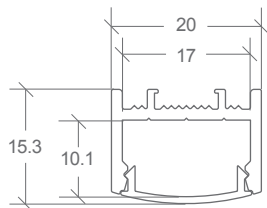
### FEATURES

- Opal or clear polycarbonate diffuser
- Anodised aluminium, black, or white powder-coat
- Surface mount or recess
- Multi-purpose
- Pre-cut corner section available

Designed & engineered  
in New Zealand



### DIMENSIONS



### ACCESSORY



BL-LP-B01X-EC



BL-LP-B01XO-90H  
2 x 100MM LENGTHS  
WITH 45° MITRE  
(JOINERS INCLUDED)

### ACCESSORY

### CODE

ALUMINIUM END CAP	BL-LP-B01X-EC
CORNER SECTION 2 x 100MM LENGTHS	BL-LP-B01XO-90H
JOINER STRAIGHT	BL-LP-J101S
JOINER 90° CORNER	BL-LP-J102C
JOINER 120° CORNER	BL-LP-J121C
JOINER VERTICAL TO HORIZONTAL	BL-LP-J103VH

END CAPS SOLD INDIVIDUALLY  
X = (A) ANODISED, (B) BLACK, OR (W) WHITE